



## Covered bonds – monthly overview

*Landsbankinn sold covered bonds for ISK 2,200m and Arion Bank for ISK 1,720m in offerings in November. Íslandsbanki did not hold an offering.*

Landsbankinn sold covered bonds in the series LBANK CB 25 for ISK 2,200m at 4.35% yield (0.56% spread on RIKB) in its offering on 10 November.

Arion Bank sold shares in the series ARION CB 24 for ISK 1,720m at 3.85% yield (0.27% spread on RIKB) in its offering on 3 November. Previously issued bonds were sold.

Íslandsbanki did not hold an auction in November.

LBANK CB 21, of nominal value ISK 6,820m, matured on 30 November. ARION CBI 21, of nominal value ISK 10,220m is due on 16 December.

The yield on nominal bonds has increased YtD and returns lie between -2.1% to 0.7%. The yield on most index-linked bonds has decreased since the beginning of the year. The return on them is much better, between 4.3% to 8.2%.

Nominal bonds	Yield 30/11/2021	YTD change in yield	YTD return
ARION CB 22	2.84%	1.10%	0.7%
ARION CB 24	3.89%	1.41%	-0.8%
ISB CB 23	3.74%	1.41%	-0.4%
ISB CB 27	4.12%	1.44%	-2.1%
LBANK CB 23	3.67%	1.32%	-0.2%
LBANK CB 25	4.15%	1.20%	-1.4%

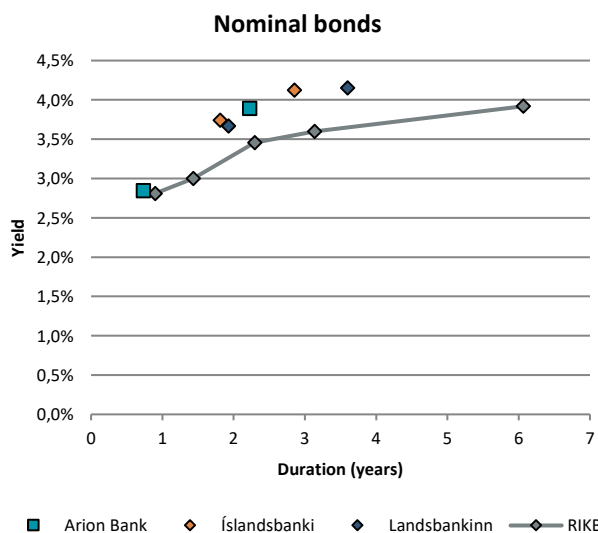
Index-linked bonds	Yield	YTD change	YTD return
ARION CBI 21	-7.61%	-7.16%	4.3%
ARION CBI 25	0.15%	0.08%	4.3%
ARION CBI 26	0.16%	-0.53%	7.7%
ARION CBI 29	0.55%	-0.36%	8.0%
ARION CBI 48	2.15%	0.01%	6.3%
ISB CBI 22	-1.75%	-1.60%	5.6%
ISB CBI 24	-0.45%	-0.90%	6.9%
ISB CBI 26	0.06%	-0.55%	7.4%
ISB CBI 28	0.00%	-0.48%	6.0%
ISB CBI 30	0.66%	-0.30%	7.7%
LBANK CBI 22	-2.00%	-2.40%	5.9%
LBANK CBI 24	-0.50%	-0.95%	7.7%
LBANK CBI 26	0.15%	-0.52%	7.7%
LBANK CBI 28	0.46%	-0.44%	8.2%

Source: Kodiak Excel

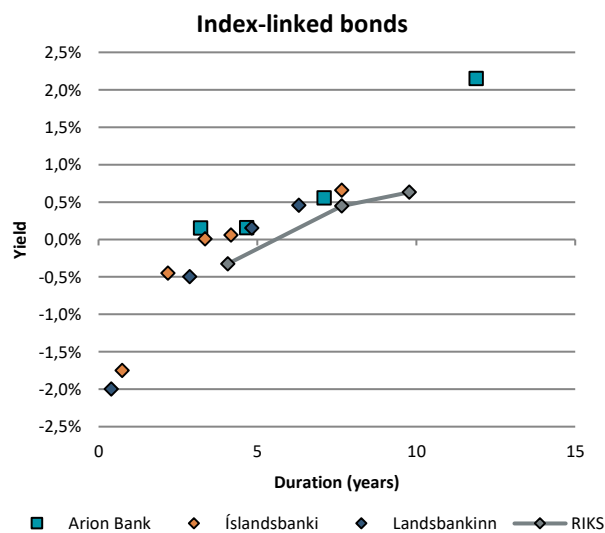
2021 jan.-nov. issuance (ISK bn., nominal value)

	Sold	Funding program
Arion Bank	1.7	-
Íslandsbanki	12.1	30-35
Landsbankinn	27.9	28-33

Source: Arion Bank, Íslandsbanki, Landsbankinn.



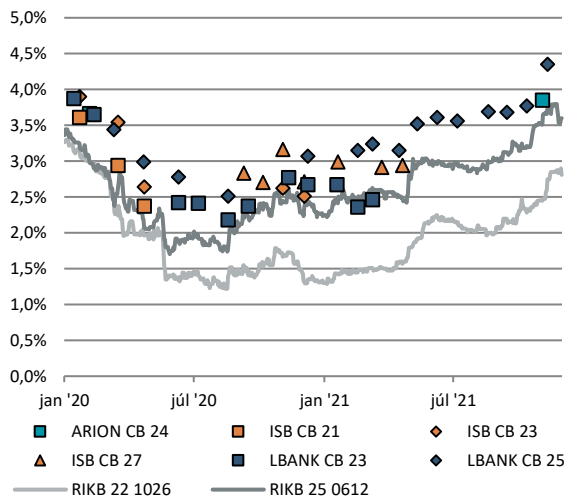
EOD 30 November 2021. Source: Kodiak



EOD 30 November 2021. Source: Kodiak

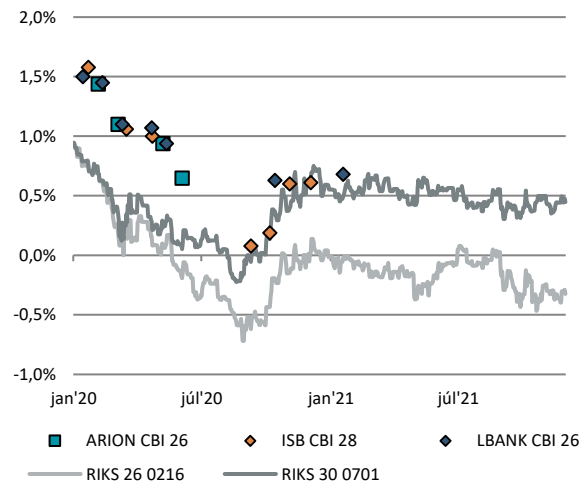


### Offering results – Nominal bonds



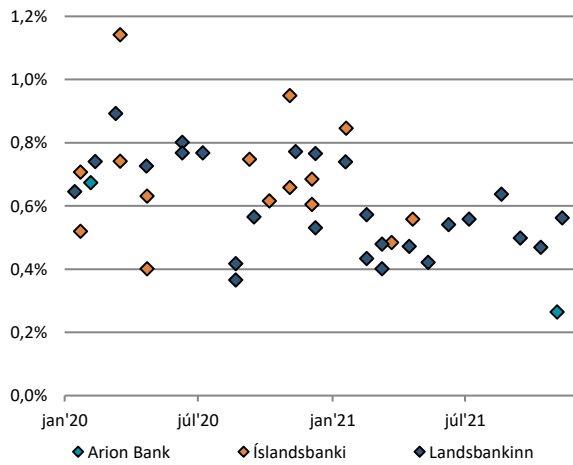
Source: Kodiak, OMX

### Offering results – Index-linked bonds



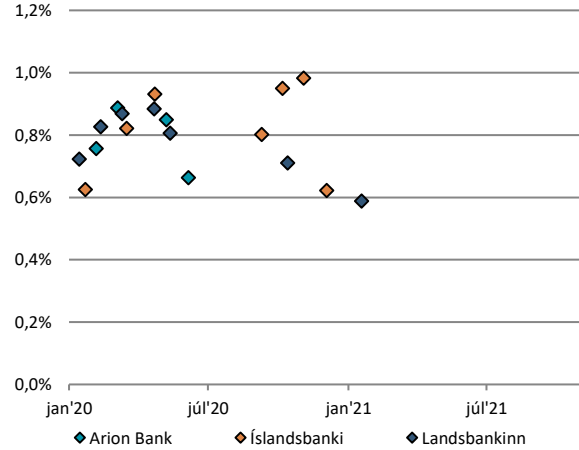
Source: Kodiak, OMX

### Spread – Nominal bonds



Source: Kodiak, OMX, own calculations

### Spread – Index-linked bonds



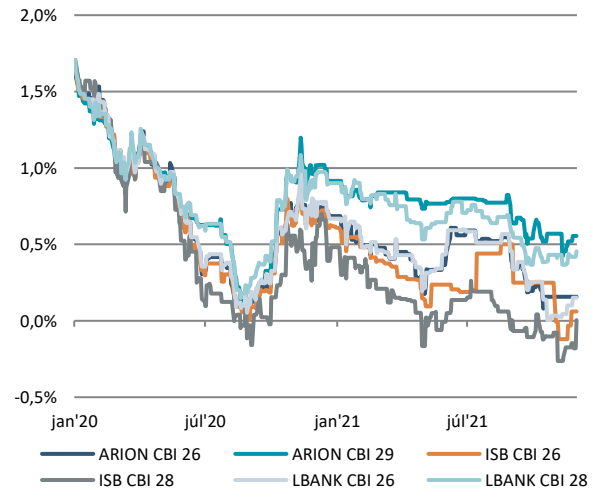
Source: Kodiak, OMX, own calculations

### Yield – Nominal bonds



Source: Kodiak

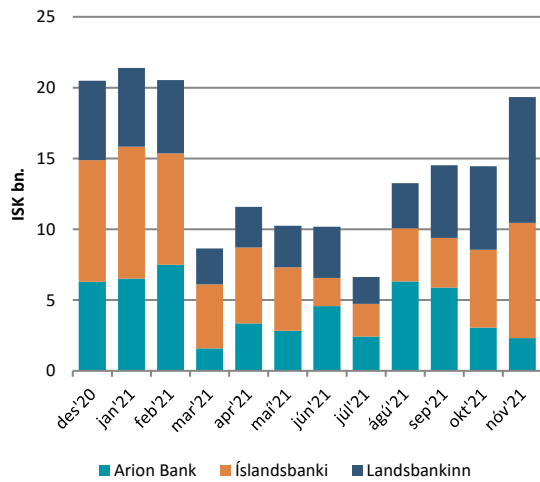
### Yield – Index-linked bonds



Source: Kodiak

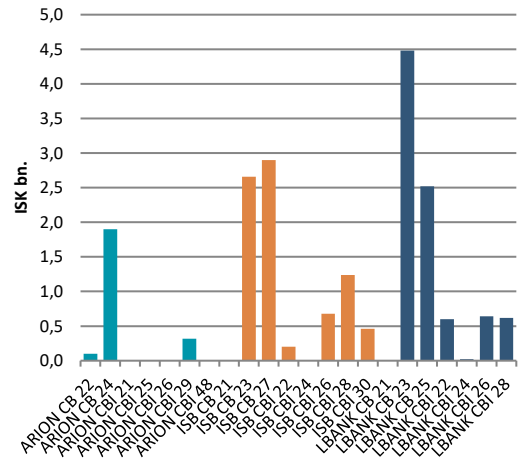


### Market turnover past 12 months



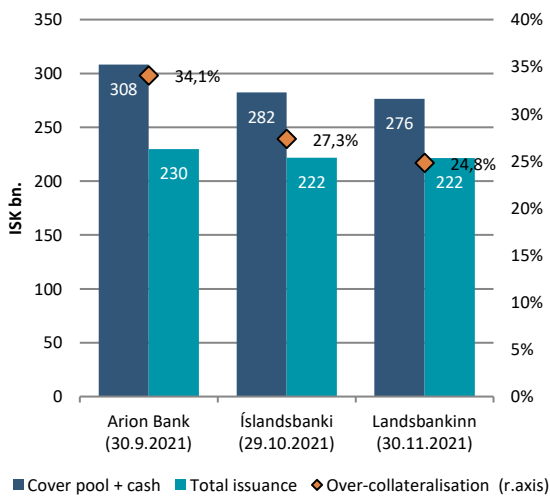
Source: Kodiak

### Market turnover in November



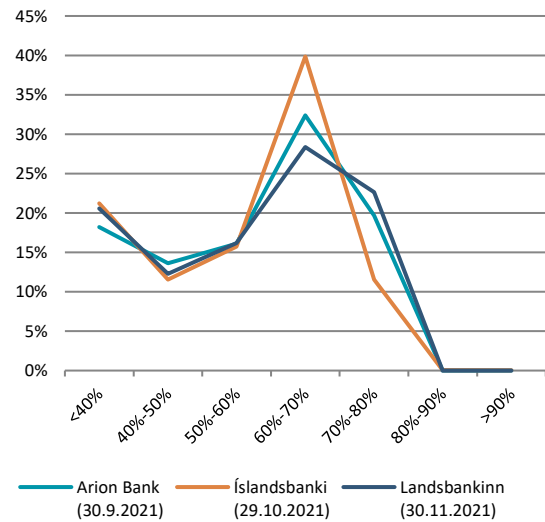
Source: Kodiak

### Issuance and collateral



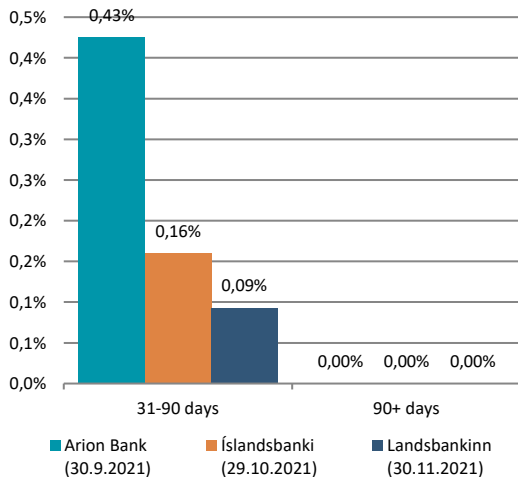
Source: Arion Bank, Íslandsbanki, Landsbankinn

### Cover pool - LTV%



Source: Arion Bank, Íslandsbanki, Landsbankinn

### Cover pool - Days in arrears



Source: Arion Bank, Íslandsbanki, Landsbankinn



## Covered bonds 30 November 2021 in ISKm

	Nominal at beginning of month	Issue/buybacks	Nominal at end of month	Inc. inflation compensation at end of month
ARION CB 22	46,720		46,720	46,720
ARION CB 24	40,180		40,180	40,180
ARION CBI 21	10,220		10,220	12,375
ARION CBI 25	37,940		37,940	44,100
ARION CBI 26	17,080		17,080	18,887
ARION CBI 29	25,220		25,220	30,538
ARION CBI 48	11,680		11,680	13,366
			<b>Total:</b>	<b>206,165</b>
ISB CB 23	39,940		39,940	39,940
ISB CB 27	43,840		43,840	43,840
ISB CBI 22	17,740		17,740	21,075
ISB CBI 24	28,560		28,560	37,633
ISB CBI 26	25,460		25,460	30,509
ISB CBI 28	36,200		36,200	39,938
ISB CBI 30	24,000		24,000	27,750
			<b>Total:</b>	<b>240,684</b>
LBANK CB 21	6,820	-6,820	0	6,820
LBANK CB 23	48,040		48,040	48,040
LBANK CB 25	29,640	2,200	31,840	31,840
LBANK CBI 22	20,500		20,500	24,597
LBANK CBI 24	39,080		39,080	45,292
LBANK CBI 26	12,080		12,080	13,049
LBANK CBI 28	49,240		49,240	57,641
			<b>Total:</b>	<b>227,279</b>



Date	Offering results - nominal bonds			Offering results - index-linked bonds		
	Ticker	Nominal (ISKm)	Yield	Ticker	Nominal (ISKm)	Yield
18/01/2021	LBANK CB 23	1,700	2.67%	LBANK CBI 26	980	0.68%
19/01/2021	ISB CB 27	4,460	2.99%			
16/02/2021	LBANK CB 23	3,340	2.36%			
	LBANK CB 25	2,520	3.15%			
09/03/2021	LBANK CB 23	1,240	2.46%			
	LBANK CB 25	1,860	3.24%			
22/03/2021	ISB CB 27	620	2.91%			
15/04/2021	LBANK CB 25	4,220	3.15%			
20/04/2021	ISB CB 27	4,100	2.94%			
11/05/2021	LBANK CB 25	440	3.52%			
08/06/2021	LBANK CB 25	500	3.61%			
06/07/2021	LBANK CB 25	1,820	3.56%			
19/08/2021	LBANK CB 25	2,660	3.69%			
14/09/2021	LBANK CB 25	3,040	3.68%			
12/10/2021	LBANK CB 25	1,380	3.77%			
03/11/2021	ARION CB 24	1,720	3.85%			
10/11/2021	LBANK CB 25	2,200	4.35%			

The contents and form of this document were produced by employees of Landsbankinn Economic Research (hagfraedideild@landsbankinn.is) and are based on information available to the public when the analysis was compiled. Assessment of this information reflects the views of Economic Research's employees on the analysis date, which may change without notice.

Neither Landsbankinn hf. nor its personnel can be held responsible for transactions based on the information and opinions expressed here, as the content is not provided as personal advice on individual transactions.

Attention should be drawn to the fact that Landsbankinn hf. may, at any time, have direct or indirect interests at stake either on its own behalf or through its subsidiaries or customers, for instance, as an investor, creditor or service provider. Nonetheless, all analyses are prepared independently by Landsbankinn Economic Research and in accordance with the Bank's rules on separation of activities accessible on the Landsbankinn website.